

BASIC INFORMATION ABOUT THE PRODUCT

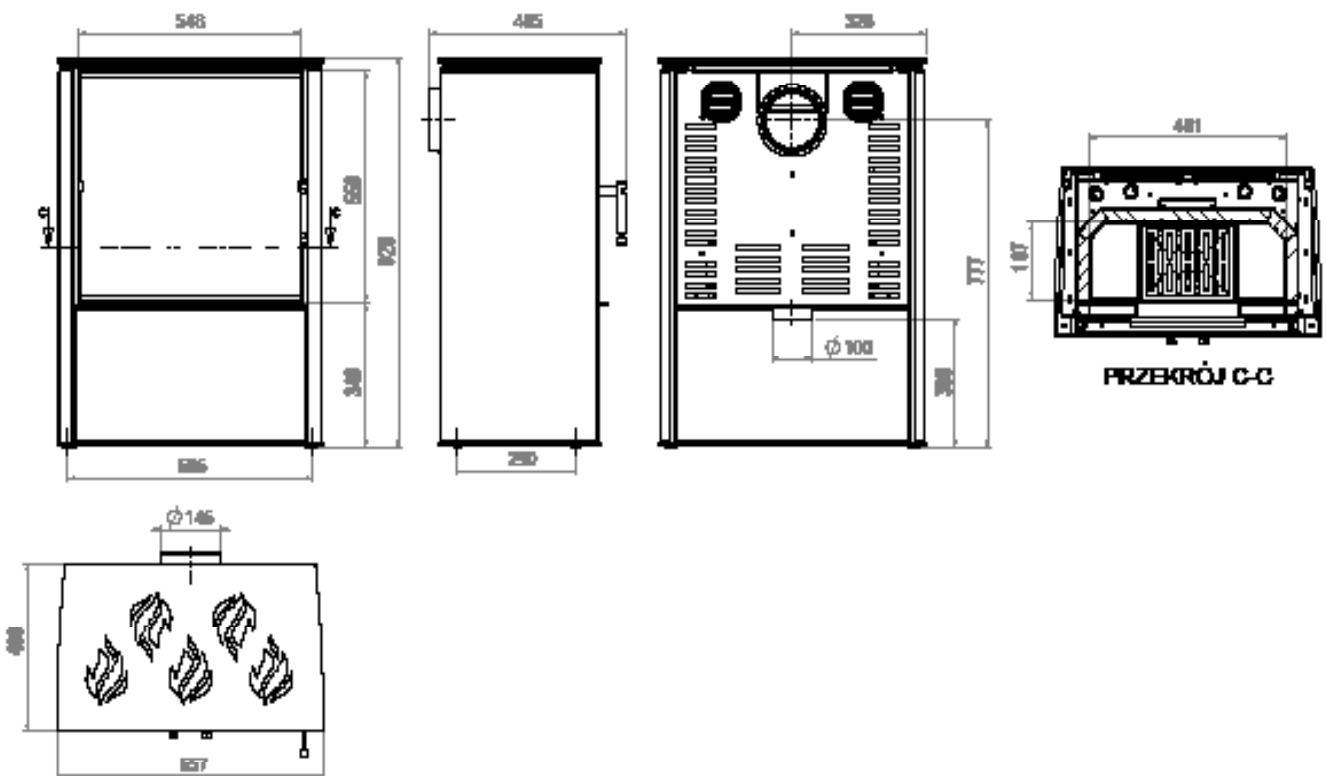


- Innovative heating plate in the fireplace
- Cast iron flue, grate and decor glass as standard.
- The combustion chamber is lined with acubeth.
- Installation of the flue at the rear (when placed at the rear, the main hole is plugged with a heating plate).
- The sides of the housing are available in different colors.
- Possibility to connect DGP.
- Independent regulation of primary and secondary air supply using two levers.
- Modular base - four mounting options (on legs or with a recess for wood).
- Fuel: seasoned hardwood (beech, birch, hornbeam) with humidity < 20%.
- Heating plate located in the upper part of the body

Nominal power [kW]	8,7
Heating load range [kW]	4-11
Thermal efficiency [%]	82
CO emissions (at 13% O ₂) [g/m ³]	0,033
Pollen emission [g/m ³]	0,480
Average fuel consumption [kg/h]	2,6
Recommended dimensions of outlet grilles	630-720
Recommended dimensions of inlet grilles	360-590
Glass dimensions [mm]	540x540
Flue diameter [mm]	150
Inlet diameter [mm]	100
Weight [kg]	140
Efficiency factor	109,9



LUPO M



LUPO M