

BASIC INFORMATION ABOUT THE PRODUCT

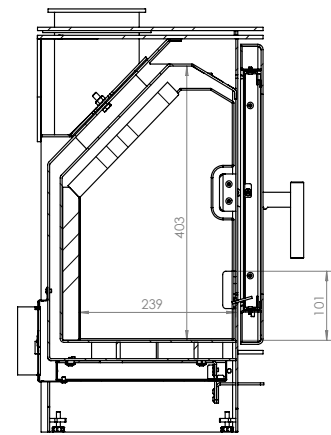
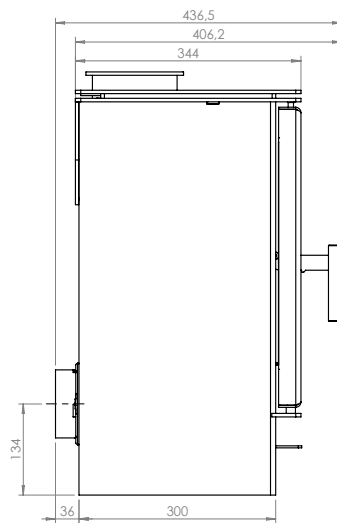
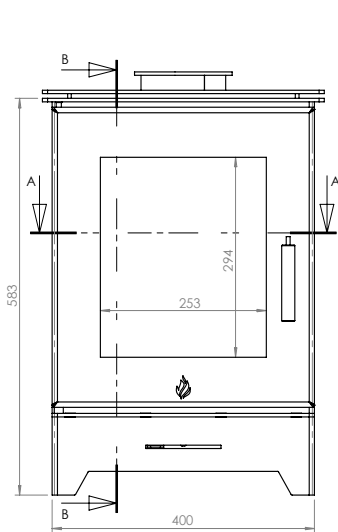


- A timeless, compact freestanding fireplace, ideal as an additional heat source.
- Suitable for open spaces.
- High thermal efficiency for economical wood burning.
- Paint finish designed for high temperatures.
- Air curtain on the front window and aeration system on the rear wall.
- Two-stage aeration with a single damper to regulate the air supply.
- Combustion chamber lined with accumulation material with grateless hearth.
- Optional fresh air intake for compatibility with mechanical ventilation.
- Double-polished fireplace ceramics with heat resistance of 800°C and stylish DECOR frame.
- Minimalist steel vertical grate.

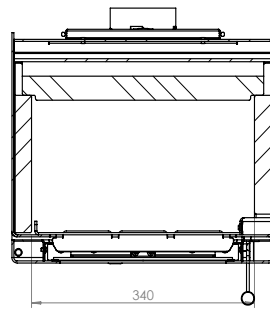
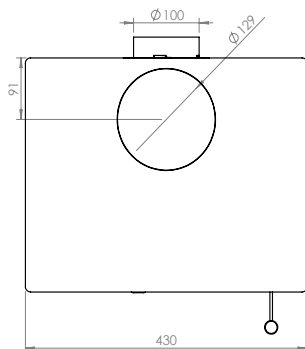
Nominal power [kW]	5,4
Heating load range [kW]	2,5 - 7
Thermal efficiency [%]	85
CO emissions (at 13% O ₂) [g/m ³]	1,216
Pollen emission [g/m ³]	0,02
Average fuel consumption [kg/h]	1,7
Glass dimensions [mm]	338 x 273
Flue diameter [mm]	129
Weight [kg]	62
Efficiency factor	113,3



GATTO SE



PRZEKRÓJ B-B
SKALA 1 : 7



PRZEKRÓJ A-A
SKALA 1 : 7

Gatto SE
Masa: 63kg

GATTO SE